

# Bexleyheath Newsletter



**April 2023**

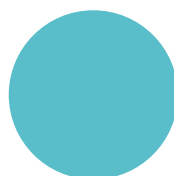
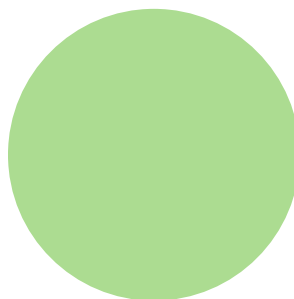
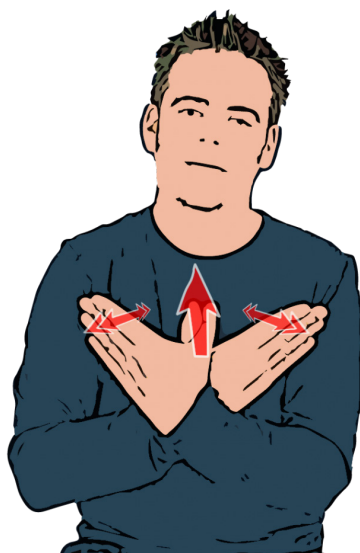
Welcome to the monthly edition of the monkey news



## Theme of the Month

### Lifecycles

- **Song of the Month:**  
The Lifecycle Song
- **Theme book:**  
Butterfly Lifecycle
- **Sound of the Month:**  
L for Lifecycle
- **Theme sign:**  
Butterfly



## Celebrations/Festivals in April

**7th April**

Good Friday

**10th April**

Easter Monday

**21st - 22nd April**

Eid al-Fitr

**9th April**

Easter Sunday

**10th April**

Siblings Day

**23rd April**

St George's Day

## Employee of the Month

**Sophie Gaylor**

We would like to say Congratulations and a massive Thank you to Sophie who was our Employee of the Month! Sophie always goes above and beyond during her time at Monkey Puzzle and is a very positive staff member who contagiously demonstrates her passion for Childcare!



Here is what we have been getting up to...



The children have been taking part in lots of experiments throughout the month. Two of our favourites being a balancing experiment where the children discovered that they could balance better with their eyes open rather than closed as well as a substance experiment where we had to discover which substance didn't mix with any other substance.



Here are some pictures of our staff having First aid training. All of our staff at Monkey Puzzle Bexleyheath are first aid trained!







Here are some more pictures of trips that we have been on this month.



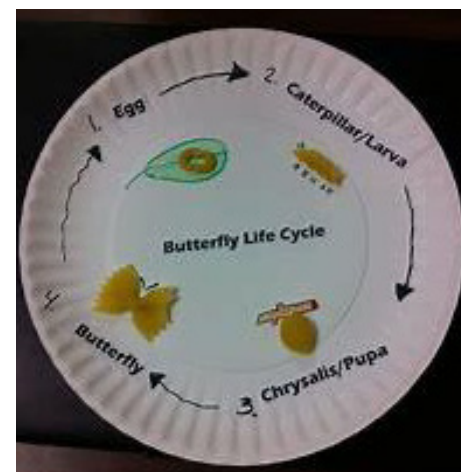




## Ideas for Home Learning

There are lots of different activities that can be done at home to link to our theme of the month. These can either be outings or creative activities for indoors. Please see list and pictures below to support:

- **Grow your own plants.**
- **Order your very own caterpillar to butterfly kit.**
- **Read lifecycle books**
- **Draw your own lifecycles**



## Exclusion Periods

### Hand, Foot and Mouth

All blisters must have dried out before returning to nursery, usually after 5 days.

### Tonsillitis

If prescribed antibiotics your child will be excluded for the first 48 hours of taking them.

### Sickness and Diarrhoea

All children are excluded from nursery for at least 48 hours from their last bout of sickness or diarrhoea.

### Scarlet fever

Excluded from nursery for the first 48 hours of antibiotics.

### Eczema

Creams must be new and sealed - parents consent is required on medication form.

Excluded for 4 days from the onset of the rash.

### Measles

Excluded for 48 hours after applying first course of cream.

### Ringworm

All spots must be fully scabbed over before returning to nursery. This is usually around 5-7 days from when the last spot appears.

### Chicken pox

Excluded from nursery until cleared from head lice.

### Head lice

### Infant Suspension Calpol/Nurofen

If a child is presenting a fever, we will try to bring it down naturally however if medication is required this can only be administered once during the child's session at nursery. In this case, if a child has longer than 4 hours left of their session we will ask for the parents to arrange collection for the child. This is due to only being able to administer the medication once; if the child has a fever after the medication has worn off we would be unable to give them anymore.

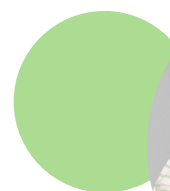
If a child has arrived at nursery after having Infant suspension the same day, they will be unable to attend that day's session. This is for the same principles as the previous policy. We apologise for any inconvenience caused.

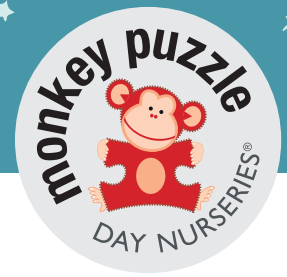
### Conjunctivitis

Children will be excluded till they are fully clear of infection and free of any discharge. Any eye prescriptions may only be administered after 48 hours.

### Prescribed Medication

Children must be on medication for a minimum of 48 hours before returning to nursery. Medication can only be administered after the 48-hour exclusion even if your child has previously had the medication.





## Reminders

### **Absence reporting procedure:**

Please ensure that you email to confirm all absences including planned days outs, holidays and sickness.

Please explain the nature of the illness in your email so that we can ensure we take necessary steps to safeguard the health of all our children.

When visiting abroad please tell us where you are going including any stopovers on flights as well as your travel dates.

We are legally obliged to record all children's absence as part of our safeguarding procedure.

Please email: [manager@monkeypuzzlebexleyheath.co.uk](mailto:manager@monkeypuzzlebexleyheath.co.uk)

### **Invoices and voucher payments please contact - [Jenny@monkeypuzzlebexleyheath.co.uk](mailto:Jenny@monkeypuzzlebexleyheath.co.uk)**

Invoices will be emailed out to all parents from our management software. Password for invoice will be set as your child's first name in lower case.

Where parents have more than one child it will be set as the eldest child's first name in lower case.

If you would like to change your voucher amount we will need to be notified by the 10th of the month. For example, if you would like to pay in vouchers for May you will need to notify us by the 10th April.

With voucher payments please ensure you set them to automatic release on or around the 27th of the previous month so that the funds clear in time for the 1st of the month.

### **Two Year Checks**

A gentle reminder about Two-year checks. Please could parents inform the nursery when you are given a date for your child's two-year check. This will allow us to complete the two-year progress check so that you can take it along to your progress meeting.

### **Terms and conditions:**

2 full calendar months written notice is required if you no longer require your nursery place.

The notice is also required if you wish to withdraw your child from the nursery or if you wish to reduce the number of days your child attends the nursery. Fees are payable during this notice period.

We reserve the right to charge interest on late fees at the statutory rate calculated daily, or rate of interest set by the court (which ever is higher), plus an administration charge of 25 pounds unless stated otherwise.



Follow  
us on  
Facebook