

# Bexleyheath Newsletter



December 2023

## It's the most wonderful time of the year at Monkey Puzzle Bexleyheath!

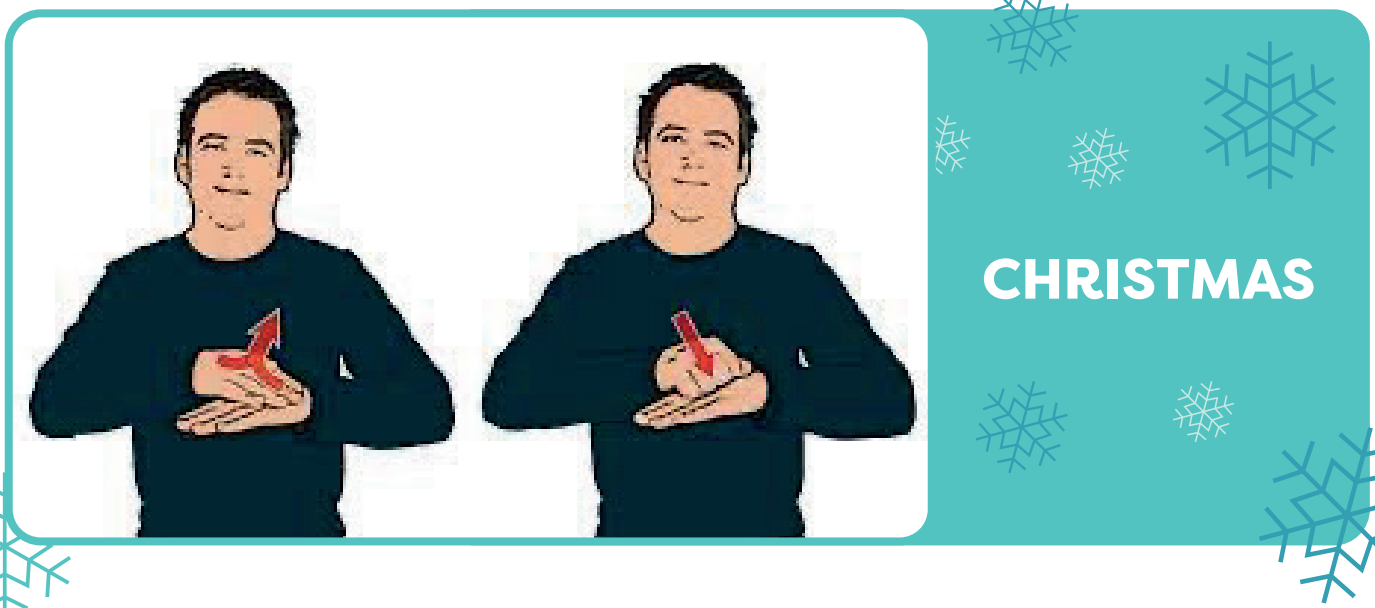


This month, we're diving into the beautiful holiday season of Christmas. It's the perfect time to celebrate with friends and family and have a magical time. Our theme for December is Holidays, and we have so many exciting activities planned for our little ones!

We're thrilled to introduce our theme book for this month, Alfie's Christmas. It's a fun and engaging story that will captivate the little ones' imaginations. Let's embark on a festive adventure together!

**The sound of the month is "T for Tree". Let's practice saying it together and have some fun with words that start with this sound! Get ready for some tree-mendous learning!**

And of course, our theme sign is Christmas. Let's get creative and have some fun! We can't wait to see all the amazing artwork and crafts our little ones will create.



# Newsletter



## December Celebrations

We have a bunch of exciting celebrations lined up this month! Which one are you most excited about? Let's learn more about these special days together! From Christmas Jumper Day to Hanukkah, Bodhi Day to National Robin Day, there's something for everyone to enjoy. Let's spread the holiday cheer!

**7th December- Christmas Jumper Day**

**7th - 15th December- Hanukkah**

**8th December- Bodhi Day**

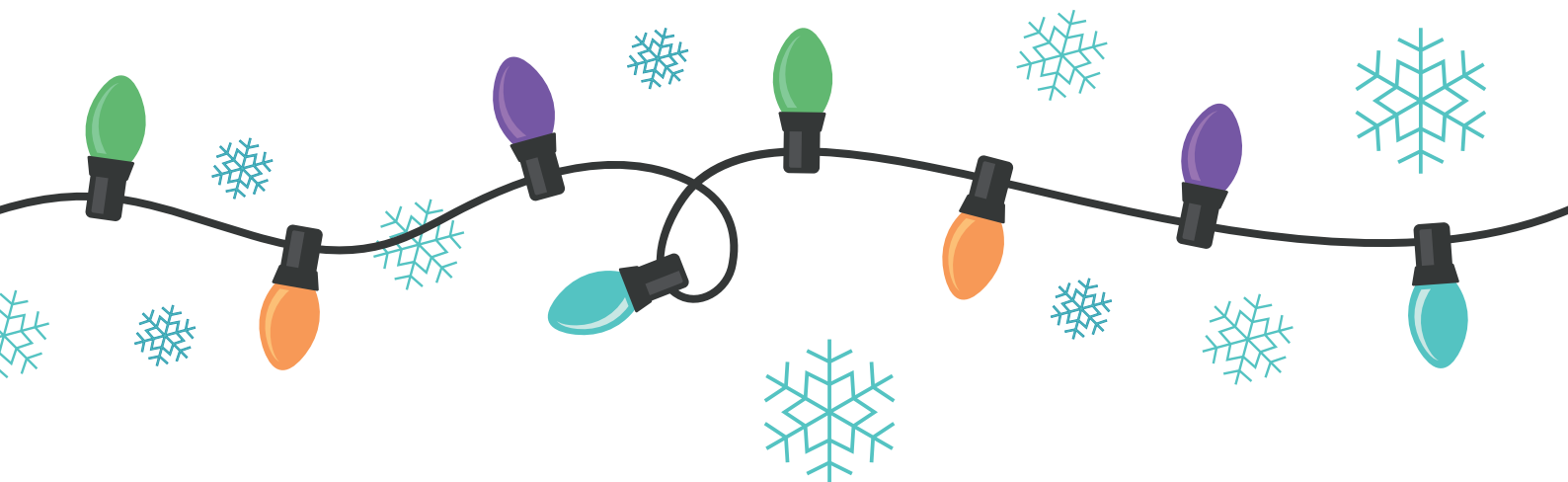
**15th December- Wear a Christmas Hat Day**

**16th December- Jane Austen Day**

**21st December- National Robin Day**

**24th December- Christmas Eve**

**25th December- Christmas Day**



# Newsletter



## Important Communication

We wanted to let you know that there have been some changes to the 2-year review process by Bexley. As a result, we will be adjusting how we conduct the review at our nursery. We have sent out an email with all the details, but if you have any questions or concerns, please reach out to us. We're here to help!

This month, we also had a professional photographer come in to capture our little ones strike poses, giggle, and playfully interact with the camera. We are very excited to see our children's Christmas photos! Get ready for some adorable memories.



**We wish you all a very Merry Christmas and a Happy New year  
from all at Monkey Puzzle Bexleyheath!**

# Newsletter



## Employee of the Month

Let's give a big round of applause and congratulations to Aimee, our Employee of the Month! Aimee is an asset to our team and always goes above and beyond for not only her staff and children but supports the other rooms as well. Thank you, Aimee, for your dedication and hard work!



## Breakfast Reminder

Just a friendly reminder that breakfast is served until 8:30 am. If you'd like your child to have breakfast at the nursery, please make sure to arrive on time so they can enjoy their meal. We want to start their day off right!



## Highlights of Our Learning Journey

This month, we've been exploring the season of Autumn. We have carried out many Autumnal activities, one being discovering what happens to the trees during this colorful season. We then used the leaves to paint with and explore the different textures of the ones we found in the garden! It's been a leaf-tastic adventure!



We've also celebrated Halloween by dressing up in our spooky costumes and getting into the Halloween spirit with a spooktacular array of activities. One of our favorites was decorating our very own Halloween biscuits to take home. Yummy and scary!

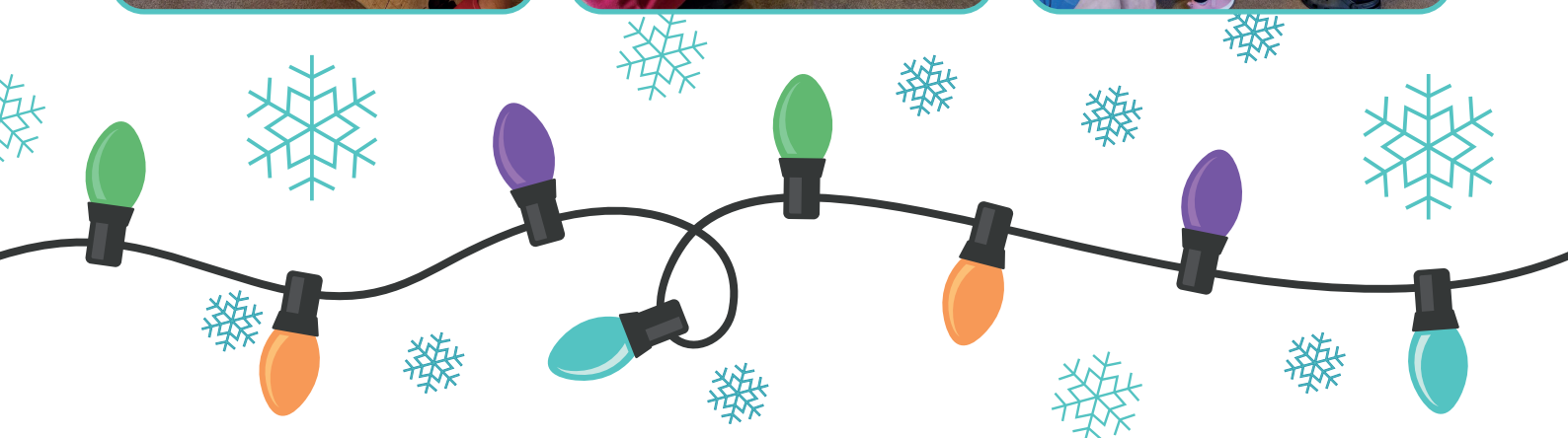




# Newsletter



In addition to our monthly theme, we've been spreading kindness throughout the nursery. We recently took a trip to the care home, where the children drew lovely pictures to give to the people. We then spent some quality time reading stories and making friends. The children had a great time, and there are more acts of kindness to come!



## Home Learning Ideas

Looking for some fun activities to do at home? We've got you covered! These ideas will help support your child's learning and extend their nursery experience in the comfort of your own home. From Christmas tree play dough to making your own wreath, there's something for everyone to enjoy. Let's make this December a month filled with learning, fun, and lots of Christmassy activities and joy!

- Christmas tree playdough: Create your own playdough using green food coloring and add some glitter for a festive touch. Let your child shape and decorate their own Christmas tree using playdough and small ornaments.
- Make your own wreath: Collect some leaves, twigs, and pinecones from your backyard or local park. Use a paper plate as the base and let your child glue the natural materials onto it to create a beautiful wreath. Hang it on your front door to welcome guests!
- Paper plate Christmas masks: Cut out eye holes in paper plates and let your child decorate them with markers, glitter, and other craft materials. They can create their own Santa Claus, reindeer, or snowman mask and have fun pretending to be their favorite Christmas character.
- Christmas salt dough ornaments: Mix together 1 cup of flour, 1/2 cup of salt, and 1/2 cup of water to create a dough. Roll it out and use cookie cutters to create Christmas-themed shapes like stars, bells, and stockings. Let them air dry or bake them in the oven at a low temperature. Once they're dry, your child can paint and decorate the ornaments.
- Visit the Christmas lights: Take a walk or drive around your neighborhood to admire the beautiful Christmas lights and decorations. Talk to your child about the different colors and shapes they see. It's a magical experience that will get everyone in the holiday spirit!
- Watch the nativity: Find a child-friendly nativity play or movie to watch with your child. Talk about the story of Christmas and the birth of Jesus. You can even act out the nativity scene together using stuffed animals or dolls.
- Let's have a fantastic December filled with learning, fun, and lots of Christmassy activities and joy! Share your home learning adventures with us and let's make this holiday season unforgettable!
- We wish you all a very Merry Christmas and a Happy New Year from all at Monkey Puzzle Bexleyheath! Let's make this holiday season unforgettable!





## Exclusion Periods

### Hand, Foot and Mouth

All blisters must have dried out before returning to nursery, usually after 5 days.

### Tonsillitis

If prescribed antibiotics your child will be excluded for the first 48 hours of taking them.

### Sickness and Diarrhoea

All children are excluded from nursery for at least 48 hours from their last bout of sickness or diarrhoea.

### Scarlet fever

Excluded from nursery for the first 48 hours of antibiotics.

### Eczema

Creams must be new and unsealed- Parents consent is required on medication form

### Measles

Excluded for 4 days from the onset of the rash.

### Ringworm

Excluded for 48 hours after applying first course of cream.

### Chicken pox

All spots must be fully scabbed over before returning to nursery. This is usually around 5-7 days from when the last spot appears.

### Head lice

Excluded from nursery until cleared from head lice.

### Infant Suspension Calpol/Nurofen

If a child is presenting a fever, we will try to bring it down naturally however if medication is required this can only be administered once during the child's session at nursery. In this case, if a child has longer than 4 hours left of their session we will ask for the parents to arrange collection for the child. This is due to only being able to administer the medication once; if the child has a fever after the medication has worn off we would be unable to give them anymore.

If a child has arrived at nursery after having Infant suspension the same day, they will be unable to attend that day's session. This is for the same principles as the previous policy. We apologise for any inconvenience caused.

### Conjunctivitis

Children will be excluded till they are fully clear of infection and free of any discharge. Any eye prescriptions may only be administered after 48 hours.

### Prescribed Medication

Children must be on medication for a minimum of 48 hours before returning to nursery. Medication can only be administered after the 48-hour exclusion even if your child has previously had the medication.





# Newsletter



## Reminders

### Absence reporting procedure:

Please ensure that you email to confirm all absences including planned days outs, holidays and sickness.

Please explain the nature of the illness in your email so that we can ensure we take necessary steps to safeguard the health of all our children.

When visiting abroad please tell us where you are going including any stopovers on flights as well as your travel dates.

We are legally obliged to record all children's absence as part of our safeguarding procedure.

Please email: [manager@monkeypuzzlebexleyheath.co.uk](mailto:manager@monkeypuzzlebexleyheath.co.uk)

### Invoices and voucher payments please contact - [Jenny@monkeypuzzlebexleyheath.co.uk](mailto:Jenny@monkeypuzzlebexleyheath.co.uk)

Invoices will be emailed out to all parents from our management software. Password for invoice will be set as your child's first name in lower case.

Where parents have more than one child it will be set as the eldest child's first name in lower case.

If you would like to change your voucher amount we will need to be notified by the 10th of the month. For example, if you would like to pay in vouchers for May you will need to notify us by the 10th April.

With voucher payments please ensure you set them to automatic release on or around the 27th of the previous month so that the funds clear in time for the 1st of the month.

### Two Year Checks

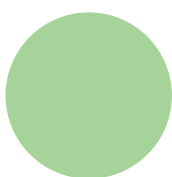
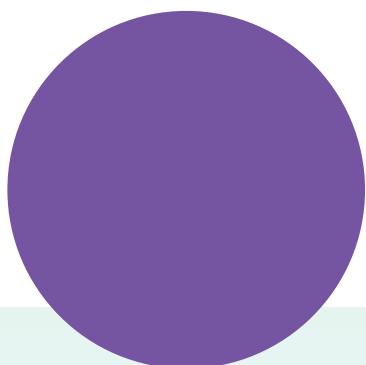
A gentle reminder about Two-year checks. Please could parents inform the nursery when you are given a date for your child's two-year check. This will allow us to complete the two-year progress check so that you can take it along to your progress meeting.

### Terms and conditions:

2 full calendar months written notice is required if you no longer require your nursery place.

The notice is also required if you wish to withdraw your child from the nursery or if you wish to reduce the number of days your child attends the nursery. Fees are payable during this notice period.

We reserve the right to charge interest on late fees at the statutory rate calculated daily, or rate of interest set by the court (which ever is higher), plus an administration charge of 25 pounds unless stated otherwise.



Follow us on  
Facebook